



- Burglary, robbery & vehicle crime
- Reducing the number of people who re-offend
- Reducing domestic abuse
- Increasing the number of drug users in treatment
- Reducing anti-social behaviour

Targeting crime, making you safer



I am delighted that the hard work and effort of all the staff and partners on the County Division resulted in a significant drop in crime last year, coupled with a larger number of crimes detected.

However, we are not complacent and we are all focused on delivering even better performance to all our communities in the months ahead.

In particular we know that we have to work hard to increase the confidence people have in us and, by doing so, ensuring that our communities are safe and really feel safe.

Chief Superintendent Andy Street, Divisional Commander



Local Priorities



The policing priorities for the Central Bedfordshire area are agreed following consultation with local people.

Last year you asked us to concentrate on addressing burglary, criminal damage, roads policing, domestic abuse and increasing our visibility.

Key performance highlights for 2008-09 compared to the previous year show that:

Robbery	- a reduction of 2%	3 fewer crimes
Theft of a motor vehicle	- a reduction of 18%	110 fewer crimes
House burglary	- an increase of 10%	117 more crimes
Domestic Incidents & Crimes	- rose by 1%	20% more crimes
Criminal Damage	- a reduction of 14%	535 fewer incidents

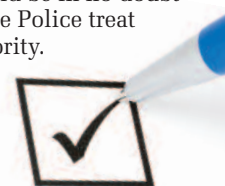
Our Safer Neighbourhood Teams are firmly embedded in communities, improving accessibility and visibility.

The Roads Policing Unit provides invaluable expert assistance including casualty reduction, accident investigation and speed enforcement.

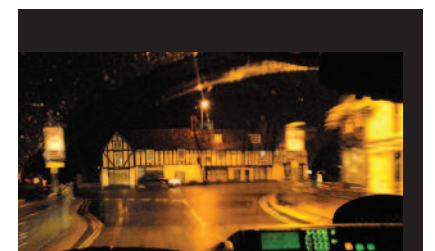
Rapid Results for Robbery Team

A specialist police team set up to address robberies has proved that it does not hang about. The Dunstable-based Priority Crime Investigation Team arrested four men within 45 minutes of a robbery in Luton Road, and made two further arrests within 24 hours of another offence in Court Drive.

Detective Sergeant Mark Crone said: "Offenders should be in no doubt that Bedfordshire Police treat robbery as a priority. They will be caught and put before the Courts."



Cannabis seized



Central Bedfordshire is proving that people committing drug-related crimes will be caught and dealt with.

Safer Neighbourhood Team officers have recently carried out three drugs warrants in the Biggleswade and Sandy area.

At one address officers found over 50 cannabis plants in various stages of production, which were removed and destroyed. The two offenders were arrested and charged.

A small number of cannabis plants were seized at another address and the offender brought to justice.



Did you know?

- Crime dropped overall in Central Bedfordshire by 811 (5%) in 2008-09.
- The number of crimes detected rose by 96 (3%) in 2008-09.

- We are carrying out a review of how we work to make our frontline services better, and reduce bureaucracy.
- We have now aligned our policing teams to local unitary

- authority boundaries, making our partnerships work better.
- We have developed our consultation with you, with more local surgeries and meetings giving you more influence.



Connecting Police & Communities



The Police Authority is a vital link between local communities and Bedfordshire Police. Our 17 members, made up of nine local councillors and eight independent members of the public, are here to represent you and your views.

The Authority does not carry out operational policing which is the Chief Constable's responsibility. It is however, our job to scrutinise every area of police performance on behalf of local people to make sure that the service provided lives up to your expectations.

We also set the police budget and check to see that the money is invested

wisely. For example, last year we agreed a budget that would help improve police performance. The resulting drop in crime across the county, which is being sustained this year, validates that decision. Bedfordshire is definitely a safer place.

An important part of our job is to find out what you think about policing, what is important to you and where you would like to see us use the resources available to us so that we can make sure the service provided reflects those views. We consult in many different ways, using surveys, questions on our website, a citizen's panel, focus groups and by simply listening to what local people tell us.

We believe that, as local people and tax-payers, you are our customer with a right to influence how the police service is delivered. Given the current economic climate, it is crucial that we understand your views on key aspects of policing. There is no need to wait to be asked for your views, you can log on to the website or email us to tell us what you think. So please, have your say.

It's your Police Authority, monitoring the work of your Police Force.

Peter F Conniff, Chairman, Bedfordshire Police Authority

? Did we perform?



There were 5,749 fewer victims of crime in Bedfordshire in 2008-09

Crime came down by 11% in the year ending March 31st 2009, compared to the previous year and Home Office figures showed Bedfordshire to be improving in 13 out of 16 key areas and on par with our most similar forces in terms of both total recorded crime and sanction detections.

Priority areas for the year, based on what you said was most important, showed significant improvements:

Robbery was down 16%	196
Domestic burglary was down 10%	445
Theft from motor vehicle was down 21%	1395
Theft of a motor vehicle was down 16%	279



Reducing crime, increasing safety



Over the last year we have, with your help, made Bedfordshire a safer place to live by reducing recorded crime by 11%, (that is potentially 5,749 fewer victims of crime), compared to the previous year.

We have also continued our work with local communities to reduce crime and anti-social behaviour. Every area has a Safer Neighbourhood Team who are there to listen to you, find out what your concerns are, work with other local organisations and members of your community to tackle the problems you identify and give feedback about what we have done to improve your neighbourhood.

You can find out who your local Safer Neighbourhood Team is, how to contact them and get involved by visiting www.bedfordshire.police.uk or calling 01234 841212.

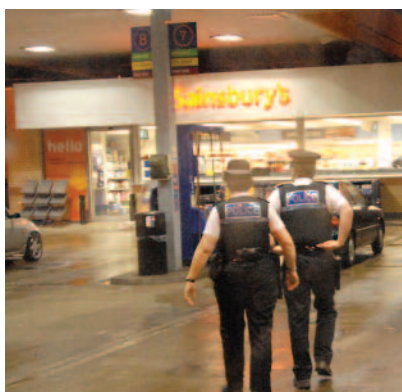
This year we will continue to focus on reducing crime even further. This is something you can help to achieve through simple actions like ensuring you lock your doors and windows properly and leaving a light on when you go out. With your help we can continue to reduce crime and make this an even safer place to live.

**Gillian Parker
Chief Constable**



When the Authority agrees the priorities for the year, we consult with local people and our partners such as the local Crime and Disorder Partnerships. As a result it has been agreed that this year we will focus on the provision of local policing in neighbourhoods and protecting people from serious threats.

The Pledge to you



Bedfordshire Police Force is committed to delivering the national Policing Pledge, which sets out clear standards of service which the public can expect to receive.

Appreciating how important it is that these standards are met, the Police Authority is monitoring the delivery of each element very closely and wants everyone to be aware of what the Policing Pledge means to them.

We have been asking how many people are aware of what the Policing Pledge means to them, with a positive response rate of 50%. If you want to know more about the Policing Pledge visit the website to read all about it or ask a member of your Safer Neighbourhood Team.

? Did you know?



Latest consultation shows that residents believe collaboration with other forces and partnership working is good value for money.

The Police Authority sets challenging efficiency targets for the Force every year and monitors how well they perform.

The Police Authority monitors complaints about the police service.

Over two thirds of people surveyed were aware of their Safer Neighbourhood Teams.

? Did you call 999?

99,305 people did! 90,932 were answered within 10 seconds.



Purse strings

The budget this year was designed to sustain the improvements in performance, maintain officer numbers, provide investment to keep you safe and develop neighbourhood policing. The current economic climate was taken into account which is why the Police Authority worked hard to keep any increase to council tax payments to a minimum.



The total budget was set at £99.507M, an increase of £3.451M over last year. This means that the amount of council tax paid by an average household (Band D) is £140.56 in 2009-10, still one of the lowest in the country.

This budget has enabled us to retain our highest ever number of Police Officers, 1274, and employ a further 20 police staff.



Solved 100%

The joint Bedfordshire and Hertfordshire Major Crime Unit investigated 14 murders across the two counties in its first full year and proved its prowess with a clear up rate of 100%!

This impressive performance has led to 29 life sentences with a total of 1000 years imprisonment for the people who committed these crimes, making Bedfordshire a safer place to live.

Detective Supt Andy Shrives, head of the unit, said: "The combined skills and experience of our 145-strong team has

increased our effectiveness in dealing with major incidents across both counties."

Peter Conniff, Chair of the Police Authority, said: "We are pleased to see such positive outcomes from this groundbreaking collaboration initiative. This led the way for our other joint ventures with Hertfordshire, from which we anticipate similar benefits."



New Authority Members

Following this year's local elections, the Authority has welcomed six new members.

Mrs Fiona Chapman, MBE

Ms Alison Graham

Mrs Sarah Holland

Mr John Mingay

Mr Lakhbir Singh

Mrs Christina Turner



Tackling the Serial Criminal

The successful techniques used in Luton to tackle the small number of habitual criminals, known as Prolific and Priority Offenders (PPOs), are being adopted across the Force, with specialist Offender Management Teams.

Chief Inspector Greg Horsford of the Force's Integrated Offender Management Unit explained that these people commit a high number of offences, usually burglary and vehicle crime, often related to a drugs habit. "It is critical that the cycle between drug dependency and crime is broken," he said. "A problem solving approach, looking at the cause of the crime rather than the crime itself, has proved very effective."

The police work with other service providers such as the Local Authority housing and social behaviour units, health professionals, Probation Service, Prison Service and organisations involved in treatment for drug and alcohol addictions to help offenders overcome the issues that drive them to crime.

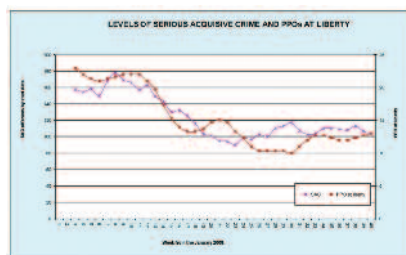
Chief Inspector Horsford added: "Our message to any offender is there is a lot of help available to help you break the cycle of offending and drug use. If you choose to carry on committing crime we will target you with all our resources and you will end up in Prison."

"We are prepared to help people to help themselves, but if they turn their back on that help, their criminal activities will only lead to the Court."

This multi-agency approach is now being used across the county to support the activity already in place to tackle those who commit the most crime.

Factfile

In January 2008 there were 24 PPOs at liberty in Luton. As a result of this targeted approach in July 2009 there were only seven at liberty, with the remainder either on remand or serving prison sentences. The benefits are evidenced by the reduction in crime in Luton, which it is anticipated will be mirrored across Central Beds and Beds Borough. In other cases, PPOs have been rehabilitated, are now in full time employment and no longer involved in crime.



Drugs week a BIG success

Twenty-five arrests were made and a significant amount of drugs taken off the streets during National Tackling Drugs Week.

The biggest haul was in Dunstable where 3.5kgs of cocaine with a street value of nearly £700,000 was discovered.

In addition, four large-scale cannabis production sites were closed, applications made for two crack house closures and further cash confiscated totalling about £12,000. Raids across the county recovered cannabis, amphetamines, ecstasy, hydroponic growing equipment, a large machete and dealing paraphernalia and paperwork.

Seven people were charged immediately while all the others, bar one given a caution for possession of a small amount of cannabis, were put on police bail awaiting the outcome of enquiries.

Det Supt Paul Coombes, who coordinated the campaign, said: "Much of the information we use is from the communities, neighbours, friends and families of those who are dealing. We deal positively with all information we receive, even if we can't do anything about it immediately."



We're Prepared



Large scale emergencies rarely occur, but if they do they can have a big impact on local people. That's why Bedfordshire Police and our partners are prepared for any eventuality.

We are part of the Bedfordshire and Luton Local Resilience Forum, a partnership that brings together police, councils, hospitals, health service, and other emergency services to respond to any major emergency in Bedfordshire. As well as dealing with the aftermath of a major incident, all services and organisations work together to ensure that the best possible plans are in place to deal with such emergencies.

In addition, the recently launched joint Civil Contingencies & Public Order Planning Unit for Bedfordshire Police and Hertfordshire Constabulary will bring improved resilience and efficiency to important areas of specialist policing.

Information at Your Fingertips

Did you know that you can find out about crime levels where you live at the touch of a button? Simply log on to www.bedfordshire.police.uk and look for 'crime mapping' in the Safer Neighbourhood section of the website.



www.bedfordshire.police.uk



Anti-Social Behaviour Drops in Biggleswade

Thanks to increased patrols in Biggleswade Town Centre, there has been a 40% drop in anti-social behaviour in the last few months.

The team has actively participated in the local Pub Watch scheme that has attracted over 15 pubs in the Town Centre, which has reduced anti-social behaviour over the weekends.

In addition, PCSOs have undertaken targeted patrols and officers have

worked with partners from both the Community Safety Group and the Community Safety Forum to reduce criminal activity and anti-social behaviour in the area.

PC Ian Wilson said: "The increased police presence has undoubtedly made a significant difference to the amount of anti-social behaviour in the Town Centre. Word is spreading that anti-social behaviour will not be tolerated."



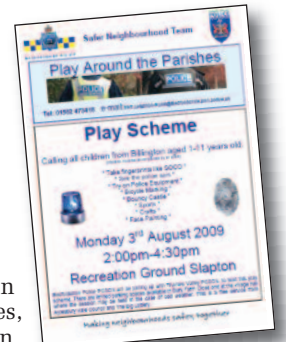
PCSOs

Help Young Detect Fun in Villages

Children in Beds and Bucks had the chance to become have-a-go detectives for a day – thanks to Police Community Support Officers (PCSOs) from both counties in an initiative called "Play Around the Parishes".

The PCSOs showed the would-be sleuths how to take and lift fingerprints like Scene of Crimes Officers (SOCOs), see the gadgetry in police vehicles, let them try on a police hat and get their bicycles security marked.

PCSO Glen said: "This was an excellent example of partnership working between two forces, the local authority and the Big Lottery. We met lots of children, mums, dads and carers and provided fun activities in a safe and organised environment."



Motorbike Club launched for young Riders

Police in Leighton Buzzard have taken action over under-age motorcyclists – but this time it is all good news for riders! Safer Neighbourhood Team officers have organised a club for mini-motorcyclists so children can ride their machines legally and safely in supervised conditions.

Young mini-motorcyclists can ride their machines in a legal, safe and supervised environment at specially organised events. The events held so far have been a resounding success.

PCSO Fiona Walker said: "Every year we get complaints about young people putting themselves and others at risk by riding on pavements, roads or open land. Hopefully these events will reduce those problems and enable young people to enjoy their machines in a safe environment."

Although the events are run by the Police, parents need to be present and riders, aged six to 16, need their own machine and helmet.



Alcohol Problem Solved



A dedicated initiative to tackle alcohol related anti-social behaviour in the Mentmore Park, Langdale Road and Lowther Road area of Dunstable has seen complaints plummet.

For some time youths had been congregating in the area with large quantities of alcohol, behaving in an anti-social manner and causing criminal damage.

The local Safer Neighbourhood Team identified specific flash points where such activities had become a regular occurrence, particularly at the weekend. They seized large amounts of alcohol and contacted the young people's parents, alerting them to the problem and warning them that their

child could face an ASBO if the behaviour didn't stop.

In addition, Police Officers, Trading Standards, Special Constables and PCSOs worked together to visit local off-licences with Test Purchase operations and give advice about sales of alcohol to those under-age.

Despite the school summer holidays there has been an impressive downturn in ASB in the area.

No seizures of alcohol have taken place for several weeks and we are receiving positive feedback from this community whose fear of anti-social behaviour and crime has reduced.



Surgeries

Leighton Linslade West Safer Neighbourhood Team (SNT) have been meeting local residents to discuss local issues and give people the opportunity to get their number plates protected free of charge during a series of surgeries.

Carnival Success

The Leighton Buzzard Rural SNT, complete with a mobile police station, joined up with colleagues from Thames Valley Police to deliver crime prevention advice and meet local people at St Mary's Village Carnival.

In Doubt? Call Us

A quick-thinking pensioner foiled distraction burglars by insisting on identification and shutting the door when they could not produce it, saying he was calling the Police. The would-be burglars fled.

ASBO Helps Local Business

Shopkeepers in Leighton Buzzard have welcomed the swift introduction of an ASBO for a persistent troublemaker whose presence was having a negative impact on business.



Local Contacts



• If personal safety is under threat, always dial 999

• To contact Bedfordshire Police for non-emergencies: 01234 841212

• Minicom Users: 01234 842233

• For advice on community safety & anti-social behaviour issues:

Bedford Borough : 01234 221881

Central Bedfordshire: 0300 300 5490

Luton: 01582 451478

• Crimestoppers: 0800 555 111

• Victim Support Line: 0845 30 90 900
• National Domestic Violence Helpline: 0800 2000 247

• Bedfordshire Police Authority, Bridgebury House, Woburn Road, Kempston, Bedford MK43 9AX
Tel: 01234 842066
Website: www.bedfordshirepoliceauthority.co.uk
email: info@bedfordshirepoliceauthority.co.uk

Bedfordshire Police Authority is committed to equality and diversity in every area of its business. If you need this document in another format or language, please let us know.



Speeding Crackdown

Residents unhappy at the speed at which motorists drive through their areas are welcoming a new speeding device. The Ampthill and Flitwick Neighbourhood Policing Team has obtained a Speed Gun for use in their area to the delight of local parish councils and safety committees.

The team has been enforcing the speed restrictions in the area. This work will continue in a bid to reduce speeding and make the communities safer to live in.